

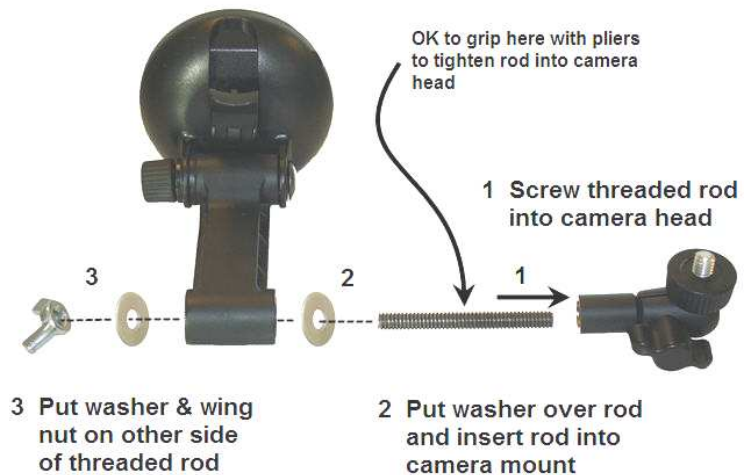
MODIFY PRODUCTS Windshield Camera Mount

This product is a generic suction cup camera mount that can be used on any flat, smooth, non-porous surface such as glass, smooth plastic, or painted metal/fiberglass. Do not use this mount on flexible surfaces, bare fiberglass, automobile dashboards, surfaces painted with a flat (primer) paint, or surfaces that have any texture at all. When mounted on these types of surfaces the mount may at first seem to hold tightly, but as air slowly seeps in through surface irregularities the mount will lose its holding power and will eventually fall off. If in doubt, test the surface by attaching the mount and waiting at least 8 hours (overnight). If the mount is not as secure as when it was first installed DO NOT USE IT. This mount is rated for cameras weighing 2 pounds or less. DO NOT OVERLOAD.

Caution - Be sure to keep camera mount clear of air bag deployment zones. Camera mounts that are improperly attached or overloaded can come loose and cause property damage or personal injury. Modify Products cannot control installation or mounting methods and is not responsible for loss of equipment, property damage, or injury caused by use of these products. Use of camera mounts is at your own risk!

Assembly

- 1 Screw the threaded rod into the camera head as far as it will go, and then tighten with pliers by gripping in the center of the rod.
- 2 Place one washer over the rod and insert the rod into the camera mount arm
- 3 Place other washer on the end of the rod that protrudes from the other side of the arm and thread the wing nut on the rod
- 4 Tighten wing nut firmly. You will not need to loosen the wing nut to adjust the camera angle so make sure it is secure.



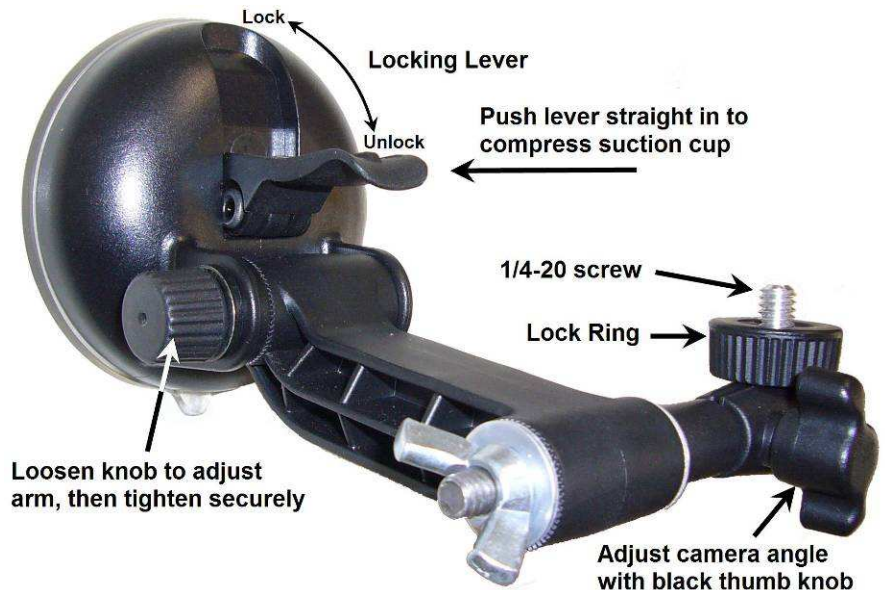
If your camera's threaded mounting hole is on the right side of the camera you can reverse the mount by inserting the camera head into the arm from the left side instead of the right.

Installation and Use

1. Rotate the head of the mount (or your camera) to thread the 1/4-20 bolt into the bottom of your camera as far as it will easily go. For maximum holding power you want to thread use as much of the bolt as possible into the base of the camera, but do not exert enough force to damage the camera base.
2. Firmly snug up the locking ring against the base of the camera. This is very important, as a loose locking ring can allow the camera to vibrate and unscrew itself.
3. Clean and dry the mounting surface to remove all traces of dirt or foreign matter.

DO NOT WET OR MOISTEN THE SURFACE OR THE SUCTION CUP. This product must be used dry.

4. Make sure the locking lever is in the up position, then place the suction cup against the surface and firmly push the locking lever straight towards the surface to compress the suction cup.
5. Turn the locking lever down to the locked position.
6. Loosen the thumb screw on the swivel head just enough to allow the head to rotate, then aim the camera and tighten the thumb screw.
7. Give the camera and mount a firm shake to make sure nothing is loose.



To remove the mount, flip the locking lever up and lift the tab on the bottom edge of the suction cup.