

Caution - This product is to be used ONLY on the Honda S2000 and is intended to provide increased driver support when using the stock lap belt and shoulder harness. It is NOT to be used as a replacement for competition belts or at any event where 4 or 5-point restraint systems are required.

This product uses an electro-magnet to activate the factory inertia-sensing mechanism built into the seat belt assembly. It does not alter the factory restraint system in any way and has no effect on the seat belt retractors or air bag system. It simply activates the "tilt" mechanism built into the seat belt, the one that normally kicks in only when you corner or brake very hard. Modifry's Seat Belt Lock is relatively easy to install and can be quickly removed, leaving no trace it was there.

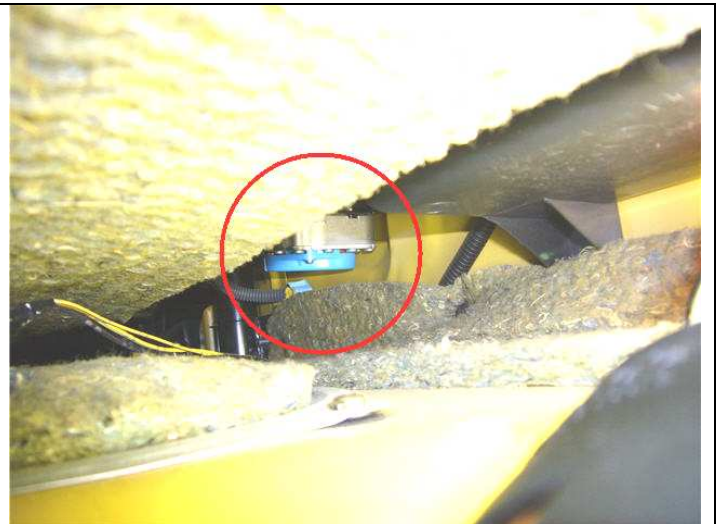
Installation

1. Install your wiring and switch – The SBL draws about ½ amp of current and I suggest using 18 gauge wire and connecting to ignition or accessory power so that the lock is guaranteed to be de-energized when the key is turned off. You can unplug the short cable from the SBL to make your wire splices, but **be sure to observe polarity – the purple wire is negative (ground) and the orange wire is +12v**. If you reverse polarity the SBL will fry, so make sure you get it right. Once you have your wiring finished, plug the connector back into the SBL.

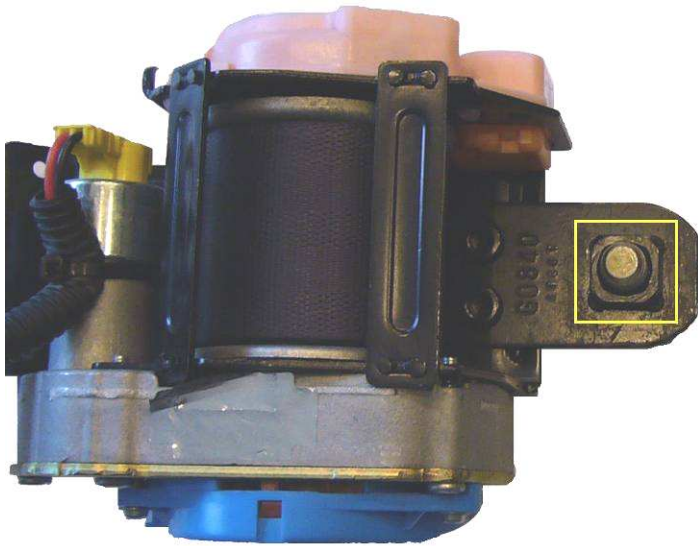
2. Get ready to install the SBL - Empty the trunk of anything breakable or that might get in the way of sitting in the trunk (really). Remove the spare tire access panel and the spare tire.

Take a minute to review the next few photos to get a feel for how the SBL mounts to the seat belt assembly. The photo at right shows what you can see from the trunk, which is just the bottom of the seat belt assembly. Looking at the next few photos you will see there is a large square nut on the right side of the bracket which is where the SBL mounts. Because you cannot see the nut you will have to place the SBL over the nut by feel. Fortunately this not very hard to do and shouldn't take more than a minute or two once you get in position.

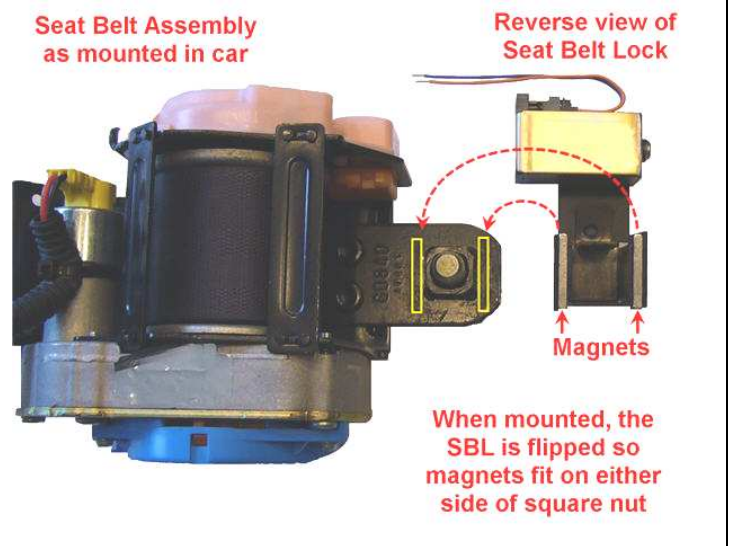
Be careful with the SBL as the magnets are extremely strong and can damage painted metal surfaces if allowed to come in contact with them. I suggest leaving the SBL wrapped in the cardboard until you are ready to mount it.



This is what you'd see if you were 2" tall and standing on the gas tank. The important part is the square nut on the right side of the bracket – that's where the SBL mounts.

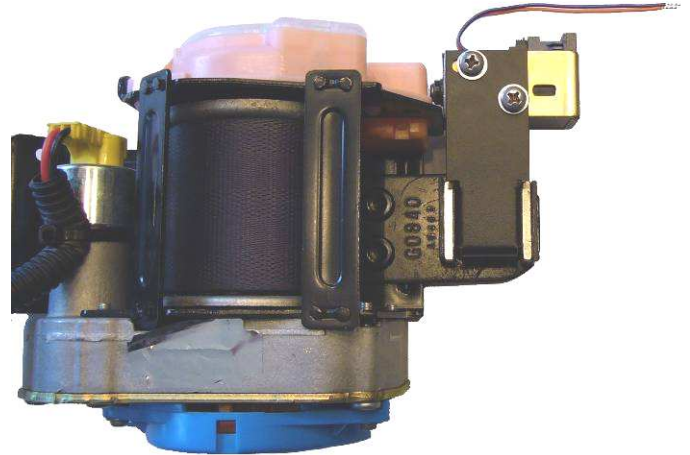


This photo shows how the SBL attaches. The yellow rectangles mark where the two magnets will end up once the SBL is placed in position over the square nut.



3. Attach the SBL – Sit or lie in the trunk and reach up under the rear shelf with your right hand. It helps to first locate the square nut by feel. Then, avoiding any other metal surfaces, pick up the SBL, position it over the square nut and slide the SBL completely over the nut so it holds itself in place. Watch your fingers – those magnets are very strong and can pinch if you're not careful. It may take a little wiggling to get the SBL positioned over the nut but it will be obvious once it snaps into place.

If you could see the final assembly this is what it would look like. Make sure the wires do not get caught between the SBL and the seat belt assembly. If the SBL does not seem to fit correctly, remove the electro-magnet and see if the bracket fits by itself. If it does, you may need to adjust the electromagnet by loosening the Philips screws and sliding it to the right. Not too far, just enough to clear - you want it as close as possible to the pink housing.



4. Test the SBL – Sit in the driver's seat and put on the seat belt. Turn the ignition to the ACC or ON position and turn on your switch for the seat belt lock. The seat belt should be locked and should not pull out of the reel. Push yourself back into the seat and feed the belt slack into the reel over your left shoulder. The slack should stay there – effectively locking you in the seat.

NOTE - To release the SBL you must first turn off the SBL via your switch (or the ignition key), then feed a little slack into the reel to release the ratchet mechanism. Once the ratchet is released the belt will return to normal operation. If it's difficult to feed the slack into the reel you can release the belt by pushing the button on the seat belt buckle. You have to push hard because of the tension on the belt but it will release with just a little effort.